

Electric High Level Order Picker

Model : T-OPS15

Electric high level order picker provides safety and high efficiency order picking for high racked warehouse.

Max. lift height
354 inch

AC

EPS

Advantages :

- Low gravity centre provides good stability.
- Advanced electric steering technology(EPS) is humanized designed, with automatic reset, height display and automatic deceleration at high lifting level.
- Finger tip control via joystick, Stepless speed control for driving, lifting and lowering speed is adjustable.
- Buffer oil cylinder: the oil cylinder will automatic decelerate when off ground 500mm, to prevent impact and lower noises.
- The mast and the frame are dividable and exchangeable.
- Low battery protection setting prolongs the battery use time.
- AC motor eliminates replacement of the carbon brush, provides good ramp starting performance and regenerative breaking functions.
- Sideway battery is convenient for exchanging and maintaining.
- The mast material is the special type imported from Germany.
- The truck can automatic decelerate when quick turning.
- High performance multi-function instrument has LED light and display function. LED indicators include battery indicator, fault indicator, Electric thermometer indicator, pedal indicator and hand break indicator.
- Multi function display, include battery status, performance, working hour, accelerator, speed, the wheel position and traveling direction.
- Press right and left keys to switch for different grades : high, normal, low, and lowest.



Pallet Lock device



Steering and speed adjusting device

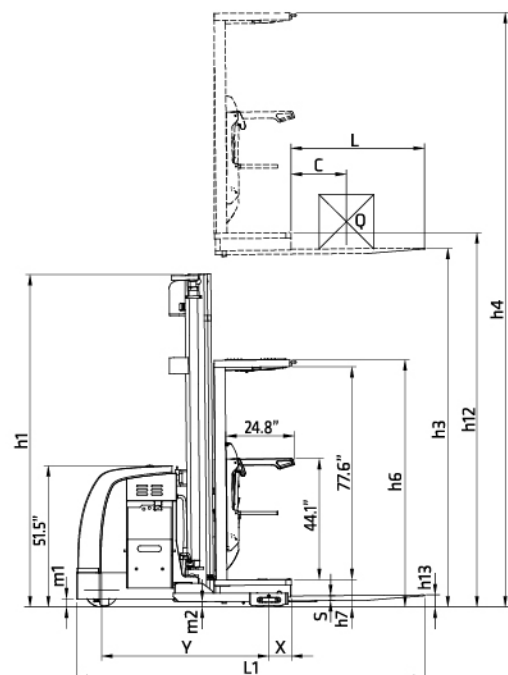
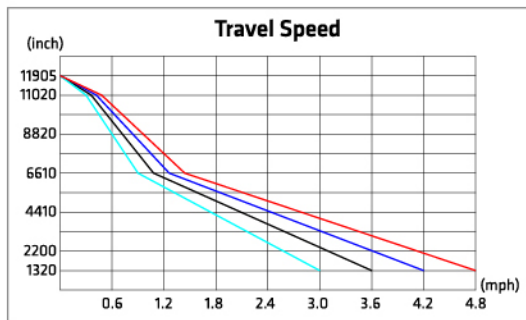
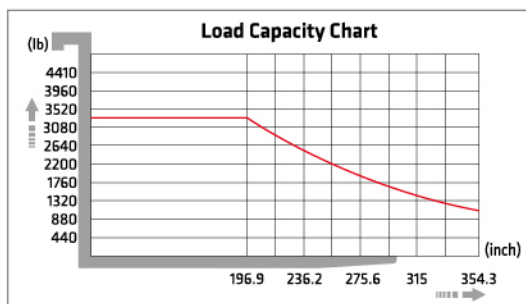


Light and fan



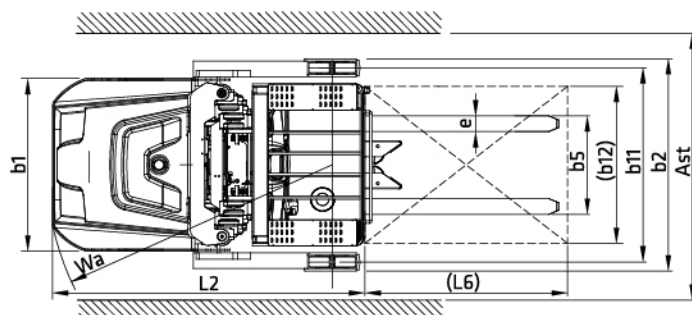


Conforms to EN ISO3691-1
EN1175-1
EN16307-1
Based on Directive 2006/42/EC
Conform to EN Standard 12895
Based on directive: 2014/30/EU (EMC)



Model	T-OPS15	
Drive type		Battery
Load capacity/ Rated Load	Q(lbs)	3300
Load centre distance	c(in)	23.6
Load distance, centre of drive axle fork	x(in)	8.1
Tyre Size, front	in	12.2×4.9
Tyre size, rear	in	5.0×2.9
Additional Wheel	in	5.9×1.85
Wheels, number front rear (x=driven wheels)		1x+2/4
Height, mast lowered	h1(in)	94.9/121.3/147.6
Max. Lift height	h3(in)	196.9/275.6/354.3
Height, mast extended	h4(in)	284.6/363.4/442.1
Height of platform	h7(in)	9.1
Lowed height	h13(in)	3.1
Overall length	L1(in)	126
Coupling height	L2(in)	77.8
Overall width	b1/b2(in)	43.3/53.2
Fork Length	s/e/l(in)	1.8/3.9/48
Width Overall forks	b5(in)	20.9/28.1
Height of overhead guard	h6(in)	90.2
Aisle Width for pallets 1000*1200 crossways	Ast(in)	55.1
Aisle Width for pallets 800*1200 crossways	Ast(in)	55.1
Wheelbase	y(in)	72.4
Bottom of mast height, laden	m1(in)	3.2
Truck body height off the ground	m2(in)	3.2
Turning radius	Wa(in)	70.9
Travel Speed, laden/unladen	mph	4.8/5
Lift speed, laden/unladen	fpm	0--29.8/0--55.1
Lowering speed, laden/unladen	fpm	0--55.1/0--59
Battery voltage, nominal capacity K5	V/Ah	24/770(1100)
Battery weight	lbs	1345(1875)
Battery dimension l/w/h	in	38.7×15.6×22.
Service weight(with battery)	lbs	8531.9

*This is only for reference and not subject to notice in advance if there is any modification.



TAILIFT MATERIAL HANDLING TAIWAN CO., LTD.

No. 5, Zili 1st Road, Nankang Industrial Zone, Nantou city 540, TAIWAN
Tel: +886-49-2263800 Fax: +886-49- 2252919
Website: www.tailift.com E-mail: insales@tailift.com.tw

TAILIFT MATERIAL HANDLING USA, Inc.

14710 John F Kennedy Blvd Suite 100, Houston, TX 77032
Tel: 281-466-1000 Fax: 909-930-9739
<http://www.tailift-usa.com>

